

Tūhuratia te Ao



Hangarau



Te Miere  
Mānuka

# He mihi

Tēnā koutou, tēnā tātou i runga i ngā tini āhuatanga katoa o te wā, me kī, haere ngā mihi, haere ngā mate, haere tonu te kaupapa e tū nei.

Ki te hunga nā koutou te kaupapa i kōkiri tēnā koutou.

Ka mihi ki a Tuihana Pook me ngā kaiwhakahaere o Whakaari Beekeepers, ki a Les Stowell o Whakaari International tae atu ki ngā kaimahi ki ngā kaitautoko ki a Jane O'Brien rātou ko Norm Parata ko Don Collier ko Zoe Te Moana ko Haki Skipper ko Winston Waititi.

Ka tika hoki kia mihi ngā ākonga o Te Kura Māori o Whangapāraoa.

Ki te whānau o Haemata tēnā koutou mō te āwhina. Ki a Trish Francis @ Mau Creative, nāna ngā whakairoiro me te waitohu mō tēnei raupapa pukapuka, tēnā koe.

Nā Hēni Jacob te reo Māori i whakarākei, nā Chamblett Design te pukapuka i hoahoa.

Tae atu ki a koe Deanne Thomas, nāu anō te kupu i whakairo. Ki a Orini Kaipara me Ngarangi Tipene-Leach nā kōrua ngā whakaaturanga, tēnā kōrua. Nā Wharehoka Wano me te whānau o Tihī i ngā whakariterite tēnei te reo mihi, tēnei te reo tangi ki a koutou katoa tihēi mauriora.

Kei te mihi ki ngā rōpū, ngā tāngata rānei e whai ake mō ngā pikitia: whārangi 4 Whakaari Beekeepers; w6 Tuihana Pook; w6 Te Kura Mana Māori o Whangapāraoa; w12 Google Images.

## Te Marautanga o Aotearoa

### Wāhanga Ako:

Hangarau

### Taumata

6

### Ngā Āhuatanga o te Hangarau

1. Ka tirohia ngā uara me ngā whakapono o iwi kē, ka:
  - whakahāngai ki te otinga;
  - mōhio ki ngā whakaharatau;
  - whakarite ki ngā hangarau a tangata kē;
  - mārama ki ngā ārai me ngā huarahi wātea ka taea.
2. Ka tūhura i ngā āhuatanga matua o te tangata e pā ana ki:
  - ngā pūnaha, ngā tukanga rānei;
  - te hiahia o ngā kiritaki;
  - ngā rautaki whakatairanga ki te kiritaki.

### Te Whakaharatau Hangarau

3. Ka arohaehae i ngā whakatakotoranga hoahoa whaiaro, ā ētahi atu hoki, hei āwhina.
4. Ka whakamātautau i ngā raraunga me ngā mōhiotanga hou kia puta ai he otinga tika.

Tūhuratia te Ao



Hangarau

*Tikina atu i tuawhakarere  
i te ao kōhatu  
ngā mōhiotanga o rātou mā  
hei kawē i a tātou i roto i te ao tūroa  
Kua takoto kē te whāriki i rarangahia e rātou  
wānangahia, tuakina kia tau  
rangahaua kia maumahara  
manakohia kia whiwhi ai  
te mātauranga Māori motuhake*

## I ahu mai tēnei kaupapa i hea?

Hehara te pī miere i te pī māori o Aotearoa taketake ake. He pī māori tonu ā tātou – e 28 ngā momo. Ko ngā pī māori, he iti ake ngā tinana, tēnā i ngā pī miere, he poto ake anō hoki ngā arero. I ēnei āhuatanga taha tinana ōna, he iti ake ngā momo putiputi e tutuki pai ai i te pī māori ngā mahi haenga, tēnā i te pī miere.

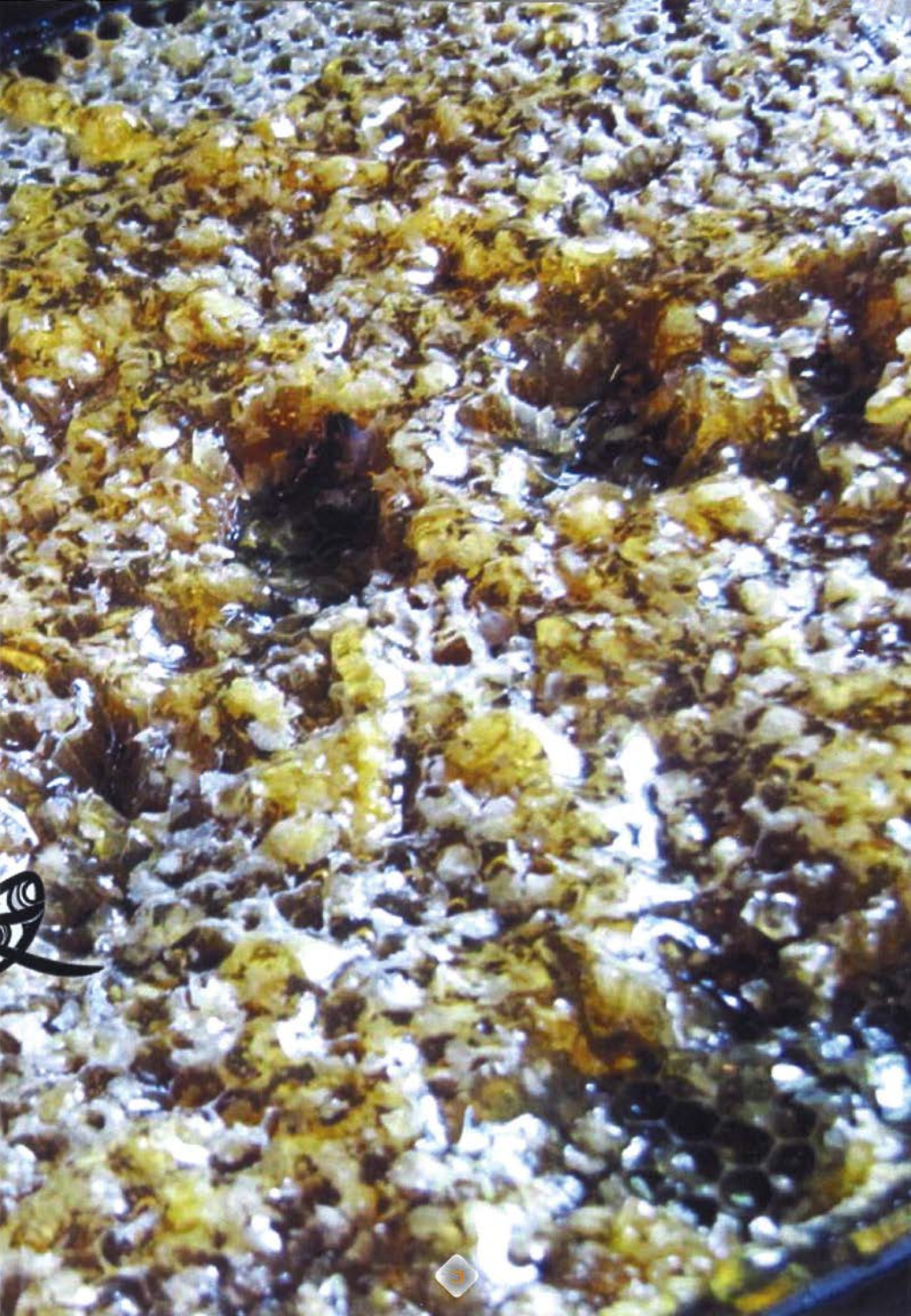
Ko ngā pī miere tuatahi ngā tūpuna o ngā pī e kitea nuitia ana i ēnei rā. I tae mai rātou ki Aotearoa nei i te taha o ngā mihingare i tatū mai ki Aotearoa i te takiwā o te 1830 ki te 1860. E whakapaetia ana he mea āta hari mai e ngā mihingare hei mahi miere mā rātou. Rarau pai ana ngā pī nei ki ngā ngahere o Aotearoa, me te rata anō ki te āhua o ngā rangi, kīhai i taro, kua tini, kua rea.

Kāore ō tātou tūpuna i pōturi ki te kite i ngā ara e whiwhi oranga ai rātou. Ana ko te mahi kai tētahi tino ara. Ka eke ki ngā tau o ngā 1860, ko ngāi Māori ērā e tango ana i te miere rahi tonu i ngā wharepī hei hoko atu mā rātou ki te hunga pīrangī. Ko rātou rā ngā tuatahi ki te tiaki pī i Aotearoa hei kaupapa mahi moni. Ā, arā tonu ētahi rōpū Māori e whakamahi ana i ngā pūkenga me ngā mātauranga ki te ngahere ki te whakatipu miere hei kaupapa pakihī i ēnei rā.

He mahi anō tā tēnā, tā tēnā momo pī i roto i te whānau nui tonu. Ka mutu, ka ū tonu tēnā ki tāna mahi, tēnā ki tāna, ā hemo noa. Tērā pea ka hia rau kiromita te tawhiti o te rere a te pī ki te whakatutuki i te mahi kua whakaritea māna, me te hoki haere anō ki te kāinga. Ka tere kitea tēnei āhua e ō tātou tūpuna, me te kite anō ko tēnei mea te miere, he rawa e kore e mimiti, ki te āta tiakina.

I ēnei rā kua rerekē katoa te āhua o te poipoi me te kohikohi i te miere, engari ko te hua ka puta, ko taua miere tonu rā. Nā ngā hangarau hou me te māmā ake o te tomo atu i ngā uru mānuka rahi tonu, kua māmā ake te kohikohi, ā, e taea ana te whakahaere hei rawa toitū.





## Ko wai mā te hunga mōhio?

I Te Tai Rāwhiti, mai i Te Whānau-a-Apanui ki Ngāti Porou, tērā tētahi takotoranga whenua 100,000 eka te rahi e tipuria ana e te mānuka. Ko ēnei uru mānuka kua tipu noa ake i ngā whenua mōriroriro o te Māori.

Ka hia nei ngā tau e haria ake ana e ngā rāwaho ā rātou kōpapa pī ki te rohe nei i te raumati, kia mahia ai e ā rātou pī ngā mahi kawekawe hae i waenga i ngā mānuka, me te mahi miere anō. Ko tā aua tāngata hei utu i te hunga nō rātou ake aua papa mānuka, he hoatu miere.

Engari i ēnei tau tata nei, kua kite anō ngā tāngata nō rātou aua

whenua i te painga o te mānuka, me te wāhi nui ki a ia e puta ake ai he miere papai tonu.

Me te aha, kua kuhuna atu e ētahi ā rātou moni, ō rātou kaha ki aua whenua, hei painga mō ngā hapori e noho nei rātou.

Hei tauira ake, ko Whakaari Beekeepers, arā kei Whangaparāoa, i te rohe o Te Whānau-a-Apanui.

E ai ki tā Wira Gardiner rātou ko Tuihana Pook ko Eddie Matchitt ko Harry Satchell ko te mahi miere ki tētahi rawa kei ō rātou whenua kē e tipu ana, he huarahi e tutuki ai ētahi kaupapa whai take tonu.



**Ko Tuihana Pook, ko Eddie Matchitt me Harry Satchell; ko tēnei tokotoru ētahi o ngā rangatira e whā o tā rātou pakihi.**



## He aha te take i tū ai tēnei kaupapa?

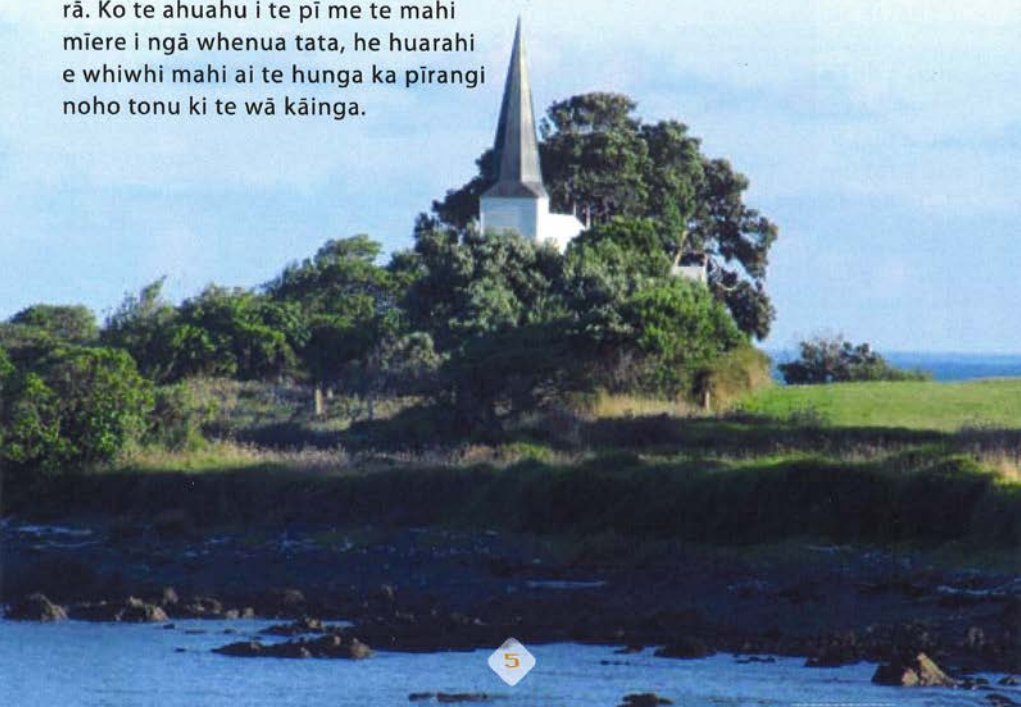
I ētahi o ngā hapori Māori iti o te taiwhenua, ka pā he raruraru taha ohaoha, taha pāpori, e uaua ai te whiwhi i te mātauranga, i te mahi, me te aha, ka āhua haumate te iwi, te hapori.

Ko te iti o ngā mahi e wātea ana i te hapori tētahi raru nui i roto o Te Whānau-a-Apanui. Muia ana te tahamoana e ngā tūruhi i te raumati. Ko te hī ika, ko te ruku kaimoana, te kaukau, ko te pārekareka noa, kei konei katoa i te raumati. Engari mō ētahi marama torutoru noa iho tērā o te tau.

Ka mutu, nā te kaha tawhiti o te whanga o Waihou me Whangaparāoa i Ōpōtiki me Whakatāne, ka tino uaua te haere pērā atu ki te mahi i ia rā. Ko te ahua i te pī me te mahi mīere i ngā whenua tata, he huarahi e whiwhi mahi ai te hunga ka pīrangi noho tonu ki te wā kāinga.

Ko te whakatau a te tokowhā, nā rātou te pakihi nei, ki te mahi i tā rātou ake mīere ki tā rātou ake rawa, he whakatau kua pā ōna kawekawe ki ngā tāngata katoa o Whangaparāoa. Ko tētahi hoki o ngā whāinga mātāmua a ngā rangatira o te kamupene, kia whiwhi mahi te tokomaha o te iwi kāinga i tēnei kaupapa ahua pī.

Ka tipu ana te puna mahi ki tētahi hapori, ka tipu anō ko te puna pūkenga. Me te rere anō o te mātauranga hou, o te whakaaro pai, waihoki, ka kaha ake, ka whaihua ake te rapu mātauranga, ka pai ake anō te taha moni. Ā, ko te mea pai katoa, ko ngā whānau, ko ngā tamariki tonu ērā ka rongu i ngā painga.



Ko Tuihana Pook te Tumuaki o te kura o tēnei hapori, o Te Kura Mana Māori o Whangaparāoa. I tana tū hei tumuaki o te kura, hei kaiwhakahaere anō o te kamupene, kua mōhio ngā ākonga o te kura he uara anō tō te whenua. Kei te kite rātou ehara i te mea kei ngā tāone nui anahe ngā ahumahi me ngā mahi. Kua mārāma ki te noho taonga mai o ngā rawa māori, ā, me pēhea te āta poipoi, te āta penapena i aua rawa kia toitū tonu ai. Me tō rātou kite anō kei a ngāi tātou, te tangata, te kawenga nui ki te tiaki,

ki te rauhi i a Papatūānuku me ngā mea e tipu ana, e ora ana i tōna mata.

Mai anō i te tīmatanga o tēnei kaupapa ahuhahu pī, kei reira ngā ākonga o Te Kura Mana Māori o Whangaparāoa. I tō rātou mātau ki tenei ahumahi i a rātou e rangatahi tonu ana, kua kaha ake pea tā rātou titiro ki te ao i runga i te mārāma, kua pai ake tā rātou tautohu i ā rātou whāinga whaiaro, i ō rātou tūmanako mō ngā rā kei te heke iho.

***Ko Tuihana Pook.***



# Te Kura Mana Māori O Whangaparāoa





## He aha te hua ka puta?

Taka mai ki te tau 2009, e toru ngā kamupene ahuahua pī e mahi ana i te takiwā o Whangaparāoa. Kei tēnā kamupene āna ake kōpapa pī, kei tēnā āna, engari me te whakamahi ngātahi i ērā atu rawa nui, pērā i te whenua me te wheketere. Heoi, i ngā marama tata nei, kua whakahoutia te taha whakahaere, kua wāhia kia rua kē ngā kamupene, arā, ko Whakaari Beekeepers me Whakaari International. He wehe motuhake ngā kōpapa pī, he wehe motuhake ngā kaimahi, he wehe motuhake anō ngā whāinga roa a tēnā, a tēnā. Engari e noho tahi ana aua kōpapa pī ki te pito whenua kotahi, ā, kotahi anō te wheketere e tango ana i ngā miere.

E kaingākauria ana tēnei mea te miere e te tini tāngata puta noa i te ao. He kai reka, engari me kōrero anō ōna painga hei rongoā. He maha ngā kamupene taka rongoā, taka pani e whakamahi ana i te miere mai i te mānuka i roto i ā rātou pani whakapaipai i te kiri, i te mea he āhuatanga patu huakita ōna. Arā anō

te inu ka mahia ki te miere me te wai o te rēmana hei patu i te maremare.

E tuawhiti ai te miere, me tuawhiti te mānuka, me tuawhiti anō te arikinui o ngā pī, arā, te kuini. Ko Norm Parata tētahi o ngā kaitiaki pī o Whangaparāoa, ko ia kei te āta whakatipu i ngā arikinui kia rangatira tonu tā rātou mahi. Nō Ngāti Porou, nō Ruatōrea a Norm. I tēnei wā kei te mahi ia mā Whakaari International.

Ko Don Collier te tohunga tiaki pī o Whakaari Beekeepers. Ko tētahi o ngā whāinga roa, kia whānui ake, kia hōhonu ake te mātauranga me ngā pūkenga ahuahua pī o ngā kaitiaki pī katoa o ngā hapū, o ngā iwi o te rohe. Nō reira kei te whāngaia atu e Don ōna mātauranga ki tana tama, ki a Graeme – ko ia tana kaiāwhina matua. Ā, tērā anō a Haki Skipper, e mahi tahi ana ki a Don rāua ko Norm, e mau ai i a ia ō rāua mātauranga hei painga mō tōna ake iwi, mō Te Whānau-a-Apanui.



Me pūkenga tonu te tangata e taea ai e ia te whakaputa i ngā arikinui tuawhiti. Me mātau ia ki ngā āhuatanga o te kuīni pai, me te āhua o ngā hono i waenga i te kuīni me ērā atu o ngā pī o te whānau nui tonu. Ki te ngoikore te arikinui, ka ngoikore tana whānau; ki te ngoikore te whānau, kāore e tino rahi te miere ka hangaia mai. Ka whā tau pea e mahi ana te kuīni i tāna mahi. Kātahi ka tangohia e te kaitiaki pī, ka turakina rānei e āna ake, ā, ina pērā, ka kuhuna atu e te kaitiaki he kuīni hou.

He mahi nui ki te āta kōwhiri, ki te āta poipoi i te uwaha pī kia tika tana tū hei arikinui mō tōna rahi. Kia nui ngā rangahautanga, te māramatanga, kia manawanui anō. Kāore e mutu te āta tiro tiro, te arotake a Norm i ngā kōpapa pī katoa, e kitea ai ko wai hei piki tūranga, ko wai te pī kei a ia ngā pūmanawa, ngā āhuatanga katoa e tika ana.

Kei te nui ngā rangahautanga mō te whakatō i te arikinui, tae atu ki te whakatō ā-ringa – he momo whakaputa arikinui tēnei e uru mai ai ngā mahi raweke ira.



He momo kaha motuhake tō tēnei mea te miere mānuka, he kaha e patua ai te huakita. Engari he rerekē tēnei kaha i ia wāhi, i ia wā anō e tangohia ai te miere. Kua tapaina tēnei kaha ko te Kaha Mānuka Ahurei, arā, ko te 'Unique Mānuka Factor', ko te UMF hei ingoa poto mōna.



Ā, ahakoa e kīia ana ko te Kaha Mānuka Ahurei, kāore e kitea tēnei kaha i ngā miere katoa ka takea mai i te mānuka. Kāore e mōhiotia ana te take i kitea ai tēnei āhuetanga patu huakita i ētahi miere i ahu mai i te mānuka, kāore i ētahi atu. Tērā pea he rerekē ētahi mānuka i ētahi atu – kei tētahi momo whāiti anake pea o te whānau mānuka tēnei kaha. Tērā rānei kei te oneone te tikanga, kei tētahi atu āhuetanga taiao rānei. Koinei tētahi mea e rangahaua ana i te wā nei.

Heoi anō, ko te mea e āta mōhiotia ana, kia teitei ake te UMF, ka nui ake te moni ka hoki mai i te hokonga atu. Ka tukuna he tauira iti o ia tangohanga miere ki tētahi wāhi whakamātau motuhake, māna e tohu mai te rahi o te UMF kei tēnā, kei tēnā miere.

Ko te wāhanga iti o te miere mānuka kei a ia taua kaha, ka tohua ki te waitohu hoko UMF® me te tau e whakaatu ana he pēhea rawa tōna kaha ki te patu huakita. Hei tauira, ko te UMF® 15+. Mā konei e mōhiotia ai, e, he miere rangatira tēnei, kua oti te whakamātau, ā, he nui tōna kaha ki te patu huakita. Kei pōhēhē te tangata hei kai noa iho tēnei mea te miere!

Māringanui ko te mānuka e tipu ana i Whangaparāoa me ngā hiwi kei uta, kei Te Whānau-a-Apanui me Ngāti Porou, e āhua pūmau ana te teitei o te UMF, nō reira e kaha pīrangitia ana e ngā kaihoko o tāwāhi.



## Te whakatū i te kaupapa

Nā te whakaaro o ngā tāngata nā rātou te pakihi ki te whakatū i tēnei kaupapa, kua nui ake ngā mahi i te hāpori, kua mahia anō he taonga hoko e manakotia ana huri i te ao. Tūturu he kaupapa tēnei e whakaea ana i ngā hiahia maha.

Kotahi anō te whāinga a te katoa o ngā rangatira o te kamupene – kia ākona ngā mea katoa e taea ana e rātou, me te whakapau i ō rātou kaha kia mānu te kaupapa, kia kaua e totohu noa.

I te wā e kākano tonu ana te whakaaro, ka kitea he moni hei whakatupu i te kaupapa i Te Papa Atawhai, i te pūtea mō Ngā Whenua Rāhui. Ka tāpiria ki tēnei ā rātou ake moni, ka tū mai ko Whakaari Beekeepers me East Coast Beekeepers i te tau 2003. Nō muri mai ka whakatūria a Whakaari International, hei pekanga tiaki i te taha hokohoko.

Ehara i te mea ko te kāhui mānuka, ko te kāhui pī, koirā anahe ngā mea e hiahiatia hei mahi mīere. Me kāhui tangata anō, ka mutu, me kāhui tangata pūmanawa rau.

### Ngā kaitiaki pī

Koinei te hunga e mārama ana ki te āhua o te pī, o tana noho ki te ao, o tana noho tahi ki ētahi atu o tana whānau nui tonu. Ko rātou ngā ringa kohikohi i te mīere, ko rātou kei te āta tiroiro mēnā kei te kaha te mahi mīere a te whānau pī, kei te pāngia e te mate, kei te pēhea kē rānei. I te takurua me whāngai anō e rātou ngā pī. Ko te oranga o ngā pī, o ngā kōpapa, kei ō rātou ringaringa. Nō reira, ki te kore e tika te mahi a te kaitiaki pī, kua raru te kamupene.

### Ngā kaiwhakahaere kamupene, kaiwhakahaere matua

Me mōhio tēnei hunga ki te whakahaere pakihi, ki te whakahaere anō i te wheketere. Ko rātou kei te whakataki i ngā kaimahi, i ngā mahi whakangungu, i ngā mahi o ia rā, i ngā tono mīere, i ngā mahi tukutuku mīere, me te rahi o te mīere e mahia mai ana e te pakihi.

### Ngā kaiwhakahaere hokohoko

Ko tā tēnei tangata, he āta kimi i ngā kiritaki ka hiahia hoko i te mīere. Me mōhio tēnei tangata ki te tuitui, ki te poi poi i ngā taura tangata. Me tohunga anō ki te whiriwhiri tahi, ki te kōrero tahi ki ētahi atu, ki te kawea anō i ngā whakaaro o ētahi atu.



## **Ngā kaitātaki, ngā rangatira o te kamupene**

Ko tā ēnei, he tohu i te ahunga o te kamupene. Mā rātou e tuhi ngā kaupapa here, mā rātou e āta tiro tiro ngā ia o te wā, mā rātou anō ngā whakatau uaua, nō reira kia whānui tonu ngā mōhiotanga o tēnei hunga ki ngā kokonga katoa o tā rātou pakihi. I Whakaari Beekeepers, kitea nuitia ai ngā rangatira o te kamupene i roto tonu i te wheketere – kua mā tēnei hunga te noho noa iho ki te pae tiketike, tohutohu mai ai ki ngā mea o raro iho.

## **Ngā kaimahi**

He kaimahi atu anō e tango ana i te miere i te wheketere, e hoatu ana i ngā tapanga ki ngā pounamu, e kawea ana i ngā mahi whakahaere o ia rā, e pupuri ana i ngā tuhinga, i ngā mauranga katoa o te kamupene.

Arā te kōrero e hāngai ana ki te ahumahi pī: “Hui tātou ka tū, wehewehe tātou ka hinga,” arā, me tautoko tahi tētahi i tētahi e ora ai te kaupapa. Ka mutu, i te mea kei tawhiti a Whangaparāoa, me whakatipu ngā tohungatanga katoa i waenganui tonu o te hapori. Me āta whakangungu ngā kaimahi, me whai kia pūkenga ngā kaiwhakahaere, ā, me hāpai te katoa i te mahi i runga i te whakaaro mā te upoko pakaru rā anō e tautuku ai.

## Te hoahoa i te waitohu

I te tīmatanga o tēnei mahi ahuāhu pī, inā kē te nui o ngā mea hei ako, hei mahi mā tēnā, mā tēnā. Ka uru mai te hapori whānui tonu ki te kaupapa, tae atu ki ngā ākonga o te kura. Ko tētahi o ngā mahi matua mā rātou, ko te whakatakoto whakaaro, whakaahua anō hoki mō tētahi waitohu mā ēnei kamupene.

Ka haere ngā rangahau e mōhio ai ngā ākonga ki te āhua o te ahumahi, me te tuitui i ērā mātauranga ki ngā tohu whenua e whai tikanga ana ki ngā hapū, ki ngā iwi o te rohe.

I te waitohu tuatahi i whakaetia e ngā kamupene, ko Whakaari tērā e tū mai ana i waenganui tonu, koia hoki te tino tohu whenua hei tautuhi i te iwi kāinga. I whakamahia he whakaahua ā-kāmera o Whakaari, me te hoatu anō i ngā kupu, i ngā tae, i ngā whakapaipai me te whakatakoto e tika ana, kia eke ki tā rātou i pai ai.

E whai ana hoki rātou kia whakawaia te hunga e whakaaro ana ki te hoko i te mīere, engari me te tautohu anō i te rohe, i te iwi nō reira mai te mīere.

***I noho tāpua mai ko Whakaari ki ngā mahi a ngā ākonga, i te mea he tino wāhi tēnei ki a rātou, otirā ki te iwi kāinga.***



Ka mea, ā, ka oti mai te waitohu, tāia ana ki ngā tapanga, whakamaua ana ngā tapanga ki ngā pounamu, haria ana ngā pounamu nei hei whakatairanga i te mīere i roto i ngā mahi hokohoko. Nā, i taua wā, ko Hapanihi tētahi o ngā whenua e hurikiko mai ana ki te mīere mānuka. Heoi anō te mate, ki tā te iwi Hapanihi titiro, he rite te hanga o Whakaari ki te honu, ā, e ai ki tā rātou he tipua te honu, he tapu, he kaiwhakaora, he puna mātauranga hōhonu tonu. Waihoki, kāore rawa i tika kia tāia te āhua o te tipua nei ki te kai. Auē taukiri ē, ka raru i konei te mahi pai a ngā ākongā! Ka mate rātou ki te hoki anō ki te papa hoahoa.

I roto i ngā tau ka hangaia, ka whakamātauria ētahi atu hoahoa, ētahi atu waitohu. Kei te mau tonu te waitohu ake a ngā ākongā ki ngā putunga kōrero o te kamupene, ā, kei te haere tonu ā rātou mahi tārai waitohu hou.

Kua waihangatia e Whakaari International tētahi tohu hoko motuhake, e kīia ana ko te mīere “ora”.

He koropepe te hoahoa matua o roto, ko te tuna tōna rite e kōru ana te takoto mai, me tōna anō upoko manu. Mārama ana tērā te kite atu he Māori ngā rangatira o te taonga hoko nei, ā, mai rā anō tō rātou whai pānga ki te whenua nō reira mai te mīere.

Kei te mahi a Whakaari International ki te hanga i ētahi atu taonga hoko ki te mīere mānuka, hei whakangata i te hiahia o tāwāhi ki tēnei puiaiki, he hiahia kāore anō kia eke ki tōna mōrahi. Ā, kei te whāwhā tonu i ētahi atu tohu whakatairanga, i ētahi atu waitohu hei hoa mō ēnei taonga hoko hou.



## Te taha hātepe me te taha whakianao

Ko tēnei mahi te tiaki pī, he neke noa atu i te kohikohi mīere noa iho. Me mahi i runga i te pōnānā, i te uaua anō i ētahi wā. Ina kohia te mīere i ngā kōpapa, ka whakamaua e te kaikohi he kākahu pītongatonga māi i tana tumuaki, heke atu ki ana matimati o raro. I te mea ka kohia ngā mīere i waenganui tonu o te raumati, tata pakaru ana ngā hamuti o te tangata mau hutu pēnei i te kaha wera. E 50,000 ngā pī ki te kōpapa kotahi. Ka tango mai ana te ringa kohikohi i te mīere, me kī pēnei ake, kei te whānako ia i te kai kua penapenatia e te whānau pī e ora ai rātou i te takurua. Koinā anō i riri ai te manomano o ngā pī. Tērā pea e waru rawa ngā kōpapa ka noho tahi i te heketea kotahi. Kia whakareatia te 50,000 pī ki te waru, e tama, he taua tini māioio – me wehi te tangata ka tika! Ahakoa te mātotoru o te kahu ārai, ka werohia tonutia ngā kaikohi mīere, he pupuhi, he mamae te kai mō te hia rā.







He mea hanga te kōpapa ki ētahi pouaka e rua. Koinei hei kāinga mō te whānau pī. Ka utaina atu ki runga i tēnei ētahi papa tāpiri. Kei tēnā, kei tēnā papa tāpiri ētahi anga 10, he momo pātakarau miere horihori ngā anga nei. Kia whakakīia e ngā pī ngā pātakarau nei ki te miere, ka hoatu he papa tāpiri atu anō ki runga ake. Pēnei tonu, ā, tae noa ki te wā e whakaaro ai te kaitiaki pī kua rahi tēnā miere, me tango.

I ētahi wā ka mahi tahi ngā kaitiaki pī ki te 'whānako' i te miere. He tikanga haumaruru tēnei, engari ko te tere atu o te mahi, ko te painga atu – ki ngā tāngata, ki ngā pī anō hoki.

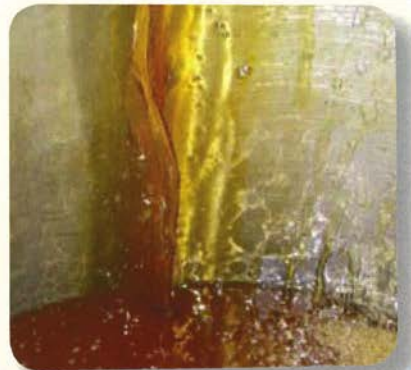
Ka pūhia atu ngā pī i te kōpapa ki tētahi pūre pupuhi. Ka kino tonu te riri o ngā pī i konei, nō reira kia mataara tonu te ringa kohikohi, kia kamakama anō. Ka kawea atu ngā papa tāpiri kua kī i te miere ki tētahi taraka, kātahi ka kahakina atu ki te whare tango miere i Whangaparāoa.

I te taenga o ngā papa tāpiri ki te whare tango mīere, kei te piri tonu ētahi o ngā pī. Kua āhua wairangi, ka mutu kei te pukuriri tonu ētahi. Ka karamuimuia e rātou ngā kokonga me ngā piere o te wheketere. Nāwai, nāwai, ā, ka mate.

Ka whakanōhia ngā papa ki tētahi wāhi whakaputu, ka whakamahanatia kia 23 tākiri tohurau te pāmahana. Mā konei e māmā ai te rere o te mīere ina tae ki ngā mīhini tango, e kore ai e moumou he pata mīere kotahi nei. Ka tangohia ngā anga i te papa, ka wāhia mai ngā pātakarau kia puta ai te mīere.

He maha ngā tukanga e wehe ai te mīere i te wākihi. Engari hei te otinga, ānana, rere ana tērā te mīere horomata i ngā kura nui. Kāore e porowhiua te wākihi – ka kohikohia anō tērā, ka hokona hei mahi i te pani whakapīata, i te kārara, i te aha atu, i te aha atu.

I te putanga mai o te mīere a tēnā, a tēnā pakihi, ka kokoa ake he tauira, ka tukuna kia whakamātauria e te taiwhanga pūtaiao, e whakatauria ai te UMF. Ko te mīere he iti ake i te 5 tana UMF, ka kīia he ‘mīere puihi’ noa iho. Kāore ōna āhuatanga patu huakita, koirā te mīere ka pania noa ihotia ki te parāoa i te mea he reka ki te arero – kāore ōna hua nui, taha rongoā nei.



## Te tukanga whakiana

Ka kawea ngā kōpapa mā runga taraka ki te wheketere tango miere. Ka waiho ki tētahi rūma mahana.

Ka wetekina ngā anga mai i ngā kōpapa.

Ka werohia te wākihi kia puta ai te miere.

Ka kuhuna atu ngā anga ki tētahi kura takahurihuri, e rere ai te miere ki waho. E 24 ngā anga ka uru ki te kura i te wā kotahi.

Ka papua atu te miere ki tētahi hanga whakawhiti wera.

Ka wehe mai te wākihi i te miere.

Ka papua atu te miere horomata ki mgā kāho nui.

Ka waiho kia tae te UMF ki te taumata tino tiketike e taea ana.

Kia tae te mīere ki te pito mutunga o ngā tukanga whakanao, ka rokirokiā ki ngā kāho nui tonu, ā, ka āta tohua nā wai tēnā me tēnā kāho. Ko ētahi kāho ka tukuna i taua wā tonu, ko ētahi ka roa e puritia ana ki te wheketere.

Ka āta horoia ngā anga me ngā papa tāpiri, ka whakaputua hei whakamahi anō ā tōna wā e hiahiatia ai.

I tēnei wā, e hokona ana te mīere i roto tonu i ngā kāho, ki ngā kaihoko waenga. He āhua rite te mīere ki te waina – kia roa ake e rokirokiā ana, ka pai ake, ā, ka pakari ake te UMF.

E toru, e whā rānei ngā kaimahi e mahi ana i te wheketere i te wā kotahi. Ā, i ngā wā e nui ana te mīere, ka haere tonu ngā mahi i te pō, me te aha, e toru, e whā atu anō ngā tāngata e whiwhi mahi ana i ngā hāora o te ruru.

Ko Mark O'Brien te Kaiwhakahaere Wheketere a Whakaari Beekeepers. Me mahi ia kia tika katoa ngā takahanga o te tukanga tango mīere, kia puta mai te mīere a tēnā, a tēnā pakihī i te wā i kī ai ia ka puta, ā, kia tika anō ngā mauranga mō ngā mahi.

Puritia ai he mauranga mō ngā mīere ka tangohia i ia rangi. Ko ētahi o ēnei kōrero, hei whakatutuki i ngā whakahau a Te Manatū Ahuwhenua, Ngāherehere.

Ko ngā mauranga nei e whakaatu mai ana nōnahea i tangohia mai ai te mīere, te rahi, te wāhi i takea mai ai, me te tangata, te hunga rānei nāna te mīere.

***Ka rokirokiā te mīere i roto i ngā kāho kia pakari ake te UMF.***



*Ko Mark O'Brien tēnei, te  
Kaiwhakahaere Wheketere  
a Whakaari Beekeepers.*

Nā te pai o ēnei tuinga, ka āta  
mōhiotia nō hea ake tēnā tauria,  
tēnā tauria – nō tēhea pito whenua,  
nō tēhea kōpapa. Pāpāria ai ngā pī me  
ngā wharepī e ngā mate huhua noa, ā,  
ina pērā, ka hē ko te mīere, nō reira he  
mea nui ēnei mōhiotanga e taea ai ngā  
mate te here, e kore ai e urutā noa.

Ahakoia kaweia ai ngā mahi tango mīere i ētahi marama noa o te tau, kei te mahi ngā kaitiaki pī i ngā marama katoa o te tau.

Ko tētahi mahi nui i te ngahuru me te takurua, ko te wehe i ngā kōpapa, e oti mai ai he kōpapa hou. Ka kōkūhua atu he arikinui hou, ana, kei a ia me āna pononga a tua atu. Ka nekehia ngā kōpapa ki wāhi kē mō te takurua, ki reira okioki ai. He mea whāngai ngā pī ki tētahi wai kua whakarewaina he huka ki roto, hei whakakapi i te mīere i whānakohia mai i a rātou i te raumati.

Ka tae ki te kōanga, ka nekehia ngā kōpapa ki ētahi māra huakiwi i Te Kaha. Ko te nuīnga o ngā whenua kei reira ngā māra huakiwi, nō ngā Māori ko rātou anō e whai pānga ana ki a Whakaari Beekeepers. Āe mārika, nō rātou te mana whenua puta noa i te rohe nei.

Ka kaweia haerehia e ngā pī te hae mai i tētahi pua huakiwi ki tētahi, e ngaruru ai ngā hua. Me utu anō te tangata nāna ngā huakiwi mō tēnei mahi, ā, he autai te moni ka hoki ki a Whakaari Beekeepers me Whakaari International i tēnei kawenga. Kia mutu te haenga o te huakiwi, ka whakahokia ngā kōpapa pī ki Whangaparāoa, kia rite ai mō te puāwaitanga o te mānuka.

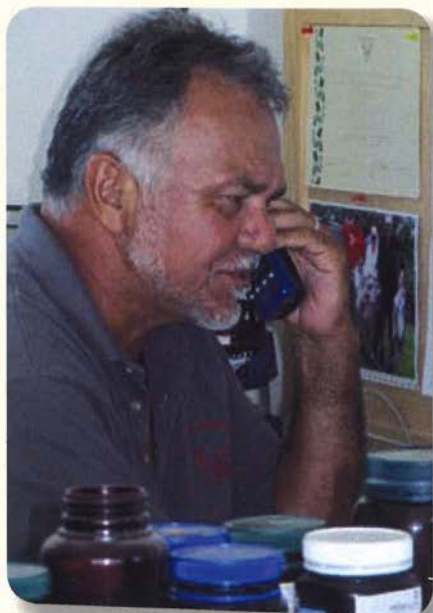
Kei te whai wāhi anō a Mark ki te kimi i ngā hunga ka hiahia hoko i te mīere, kei te mahi tahi anō ki ngā kaiwhakahaere o te kamupene ki te waihanga i ētahi taonga hoko hou, e kaweia ai te kamupene ki mua.

## Ngā mahi hohohoko, whakatairanga

Ko Les Stowell te Kaiwhakahaere Matua o Whakaari International. Kua hia tau a Les i roto i ngā mahi whakatairanga taonga hoko, kua mātau pai ki tērā ao.

Ko tētahi o āna mahi matua, ko te whai kia hoko tonu te kiritaki a Whakaari International i ngā mīere o Whangaparāoa. He teitei tonu te UMF o te nuinga o ngā mīere e takea mai ana i tēnei rohe, nō reira ka nui tonu te utu. Nā konei i kore ai e kaha hokona ēnei mīere i Aotearoa nei. Tērā pea ka NZ\$50.00 te utu mō te pounamu iti o te mīere e nui ana te UMF. Ko te tino nuinga o te kiritaki hoko mīere o Aotearoa, e hiahia ana ki te mīere hei kai noa iho, ka mutu i reira. Engari anō te kiritaki o tāwāhi – e uaratia ana e rātou te taha rongoa o te mīere. Kei te whakaputa mīere puihi tonu a Whakaari International me Whakaari Beekeepers, engari ko te mea ahurei o tā rātou mahi, ko te auau o te puta o ngā mīere e teitei ana te UMF.

Kua whiria e Les he taura hohohoko ki ngā whenua maha o Āhia, tae atu ki Hapanihi, ki Malaysia, ki Hong Kong me Haina. He kiritaki anō ā Whakaari International i Airana me Ingarangi. Kei te toroa tonutia ngā kaihoko i Ūropi. Ko tētahi wāhanga o te mahi, ko te hoahoa i ngā waitohu hou, i ngā whakapapai hou ka paingia e ngā kaihoko o tāwāhi.



***Ko Les Stowell tēnei, te Kaiwhakahaere Matua o Whakaari International.***

He rite tonu te haere a Les ki ngā hui me ngā taiopenga tauhokohoko, ki reira tūtataki ai ki ngā tāngata ka noho pea hei kiritaki ā tōna wā, me te hui anō ki ērā atu tāngata o te ao ahuahu pī.

Nā ngā hangarau o te wā, kua māmā te whakawhiti kōrero tahi ki ngā tāngata huri i te ao. Ko te ara tuihono te ara matua hei kawē i ngā mahi whakatairanga ki tāwāhi – ko tētahi 95% o ngā mahi nei e haria ana rā runga ipurangi.

## Te whakapiri tapanga me te tāhāi

I tana kāinga e anga nui ana ki ngā wai kōratarata o te whanga, kei reira a Jane O'Brien e hoatu ā-ringa ana i ngā tapanga ki ngā pounamu mīere mā Whakaari International. Ko te rahi o ngā hāora e mahi ai a Jane, kei te āhua tonu o te rahi o ngā pounamu mīere kua tonoa e ngā kiritaki.

Kia tae mai ngā pouaka ki tana kūaha, ka tahuri a Jane ki te mahi. E 20 pea ngā pouaka ka whakapiria atu e ia ngā tapanga ki runga i te rā kotahi. Ahakoa e mahia ana ki te ringa, me mahi ānō nei nā te mīhini i mahi. Kia tino tika te noho mai o te tapanga ki te taha o te pounamu, me te hīra ki te taupoki. Ki te tipitaha, ka raru.

Ā tōna wā pea ka hangaia he mīhini māna tēnei mahi, ki te rahi ake te mīere e hangaia ana e Whakaari International. Engari mō tēnei wā, kua whiwhi mahi anō tētahi o ngā tāngata o te hapori.



*Whakapiria ai e Jane O'Brien ngā tapanga ki ngā pounamu mīere a Whakaari International i tana kāinga.*





## Kei hea ināianei?

He whāinga roa, he whāinga poto anō ā Whakaari Beekeepers rāua ko Whakaari International.

E mahi ana a Whakaari Beekeepers kia 50% te maha ake o ā rātou kōpapa pī. Mā konei e nui ake ai te miere, mā konei anō e nui ake ai te wāhi ka tukuna ngā pī ki reira ki te ruirui i te hae ki ngā tipu o te māra.

Ko te wawata, kia hangaia he whare ka tū ki te taha tonu o te whare tango miere, ko tāna, he whāngai atu i te miere ki ngā pounamu.

Mō te wāhi ki a Whakaari International, kua tīmata kē tā rātou whakatū haere i tētahi whare koirā tāna mahi, ki Whakatāne. Ā, he mahi mutunga kore tā rātou rapu i ngā kiritaki hou, i ngā whakaaro hou, i ngā taonga hoko hou e tūhauora tonu ai te pakihi me te hapori.

Ā, ka pēhea ngā ākongā? Nā tēnei kaupapa kua mārama rātou ki ngā mahi ahuahū pī, kua taunga anō ki te āhua o tētahi ahumahi. Ki te whāia haerehia e rātou ngā mahi whare wānanga, ngā rangahautanga hei whakaū i ēnei māramatanga, ka ora pai a Whangaparāoa, ka ora pai anō ngā whakatipuranga kei te piki ake.



# Papa Kupu

haenga = *pollination*

honu = *turtle*

horomata = *pure, sterile*

huakita = *bacteria*

kawekawe = *impact, influence*

kōkuhua = *introduce*

māioio = *innumerable*

mōrahi = *maximum*

mōriroriro = *isolated*

ngaruru = *strong in growth, flourishing*

pāpāria = *tended to be struck/affected by disease/illness*

pātakarau miere horihori = *artificial honey comb*

pōnānā = *hurried*

puiaki = *treasure*

tāpua = *significant*

tumuaki = *crown of the head*

urutā = *spread, plague, epidemic*



I whakaputaina ēnei kohinga rauemi e Tihi Ltd rātou ko Palisade Film Production ko Deanne Thomas.

Ki te hiahia koe ki ētahi atu kape o tēnei rauemi, whakapā mai ki:

Te Ratonga Kiritaki a Te Tāhuhu o te Mātauranga

Waea koreutu 0800 660 662

Waea whakaahua koreutu 0800 660 663

Imēra: [orders@thechair.minedu.govt.nz](mailto:orders@thechair.minedu.govt.nz)

Tono mai rānei mā te Ipurangi [www.thechair.minedu.govt.nz](http://www.thechair.minedu.govt.nz)

ISBN 978-0-473-16777-6



TE TĀHUHU O TE MĀTAURANGA  
Ministry of Education

Te Kāwanatanga o Aotearoa

ISBN 978-0-473-16777-6